

FILTERS



Application Filters are designed to remove particles from fluid processing lines.

The product flows through a filtering cartridge where particles exceeding the cartridge hole size are trapped.

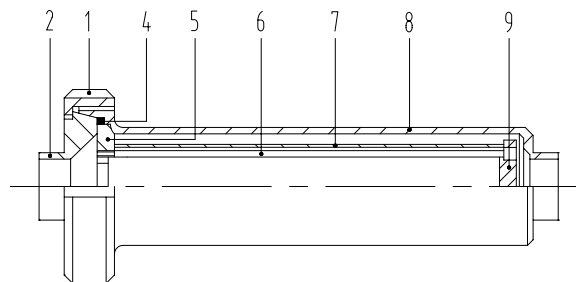
Features They offer low flow resistance and minimum pressure drop.

The filtering cartridges are available with a wide range of hole sizes, from 4 mm to 26 microns.

The cartridges are easily extractable for cleaning and servicing.

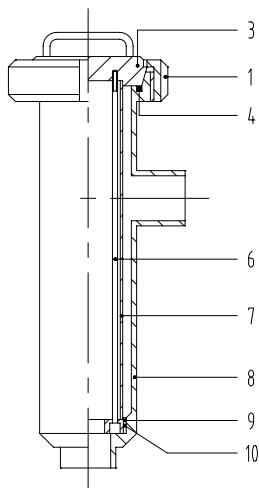
Inline filters need to be removed from the pipeline for cleaning. 90° filters do not need to be removed for cleaning as cartridges are extractable online.

Components Inline filter:



PARTS LIST		
1	Nut	Aisi 304L/Aisi 316L
2	Plain connection	Aisi 304L/Aisi 316L
4	Seal	NBR
5	Upper disk	Aisi 316L
6	Tie rod	Aisi 316L
7	Filter	Aisi 316L
8	Filter casing	Aisi 304L/Aisi 316L
9	Lower disk	Aisi 316L

90° filter:



PARTS LIST		
1	Nut	Aisi 304L/Aisi 316L
3	Blank	Aisi 304L/Aisi 316L
4	Seal	NBR
6	Tie rod	Aisi 316L
7	Filter	Aisi 316L
8	Filter casing	Aisi 304L/Aisi 316L
9	Lower disk	Aisi 316L
10	OR seal ring	NBR

Technical Data

Max. product pressure: 500 kPa (5 bar).

Temperature range: -10°C +100°C (+15° +210°F).

Finish: 120 grit (max R_a 1.01-1.14 µm, 40-45 µ").

Production range: DN 28 to DN 101, 1" to 4".

Connections: welding end, threaded end, ferrule end.

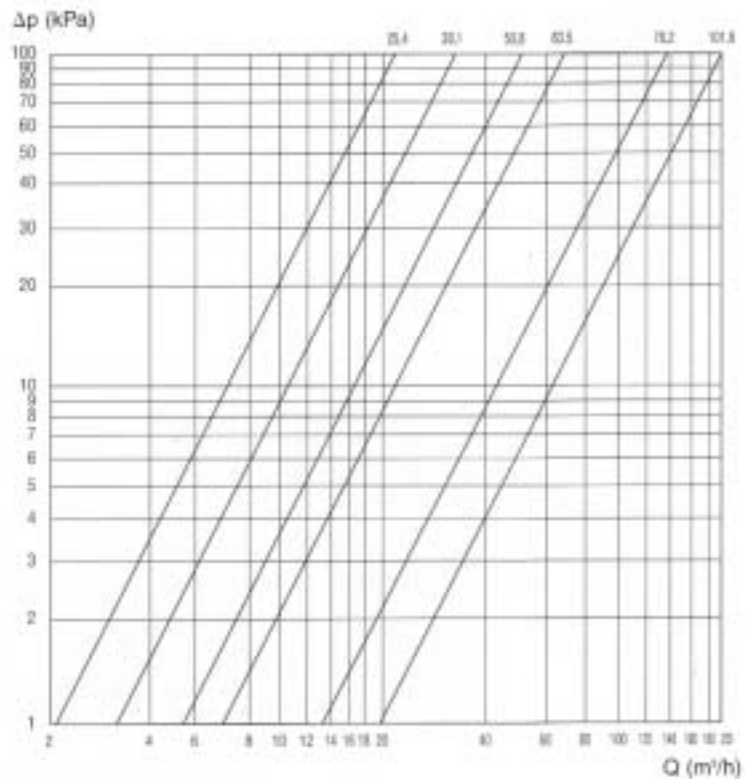
Standards: DIN, SMS, RJT BS, IDF ISS, Clamp.

Steel grades: Aisi 304L, Aisi 316L.

Flowrate Flowrate m³/h

FILTER DIAM.	FLUID SPEED M/SEC			
	0.50	1.00	1.50	2.00
25.4	0.745	1.494	2.239	2.988
28	0.882	1.764	2.646	3.528
34	1.447	2.894	4.341	5.788
38.1	1.785	3.571	5.356	7.142
40	2.041	4.082	6.123	8.164
50.8	3.294	6.588	9.882	13.176
52	3.531	7.063	10.594	14.126
63.5	5.191	10.382	15.573	20.764
70	6.152	11.336	18.460	24.616
76.2	7.509	15.019	22.528	30.038
85	9.270	18.540	27.810	37.080
101.6	14.130	28.260	42.390	56.520

Pressure Drop



For further technical information, section and dimensional drawings and range of models available please refer to our series of product brochures, technical catalogues and valve manuals.